



Asbestos Register

Blue Mountains City Council maintains asbestos registers (“registers”) and asbestos management plans (“plans”) relating to each of the buildings owned or occupied by the Council. The registers and plans record information about the existence and location of any known or presumed asbestos containing materials (“ACM”) within those buildings.

The Council’s governing body has adopted the Council’s corporate [/asbestos-registers]Asbestos Policy, which is available on our website.

The registers and plans are in two forms. First, the Council maintains a corporate asbestos register and a corporate asbestos management plan. Second, the Council has prepared individual registers and individual plans for each building that contains or may contain ACM. Hardcopies of those individual registers and plans are held in the building concerned.

Whenever work is carried out on a Council building the hardcopy register and the hardcopy plan are each amended by hand, as required. This action ensures that Council employees or contractors who work from time to time within that building have access to accurate information about the ACM that it contains or may contain.

The electronic versions of each of the corporate plans and registers, and of the plans and registers for individual buildings, are periodically updated. However, the key documents are the hardcopy registers and the hardcopy plans for each building which must be inspected before any work is carried out on that building.

NOTES:

- (1) The Council’s electronic registers and plans are valid as dated, and ARE NOT to be relied upon as definitive records and ARE NOT to be used for reference purposes for any construction, demolition, maintenance or any other onsite works. IN ALL CASES, the onsite hardcopy building specific asbestos register and building specific asbestos management plan MUST BE CONSULTED prior to the commencement of physical works on the building concerned. While the electronic versions of the Council’s registers and plans provide guidance concerning the presence or possible presence of ACM it is the onsite hardcopy registers and plans which will remain up to date.
- (2) The Council’s electronic registers and plans relate to Council owned or managed buildings. The electronic registers and plans do not relate to structures (such as picnic shelters, bus shelters and other freestanding structures). Before any work is carried out on such structures the Council’s Hazardous Materials Team (“HMT”) MUST BE CONSULTED. The HMT may be contacted at council@bmcc.nsw.gov.au. The HMT will provide information concerning any ACM that may be present in the structure concerned.

Further information: Further information on safe asbestos management may be obtained by contacting Councils Hazardous Materials Management Team at council@bmcc.nsw.gov.au.



BLUE MOUNTAINS CITY COUNCIL

18 / 267018

ASBESTOS REGISTER

BLACKHEATH TENNIS CLUBHOUSE

**9-41 LEICHHARDT STREET,
BLACKHEATH**



Trim No.	
Rec'd Records	27 NOV 2015 RMCC
REFER	
REMITTANCE	REC No.

Report

ASBESTOS REGISTER

**Blue Mountains City
Council – Stage 3**

**Prepared for:
Blue Mountains City
Council**

**Project No.
28781**

**Date:
25-11-15**

AIRSAFE

93 Beattie Street
Balmain NSW 2041 Australia
T. 02 9555 9034
F. 02 9555 9035
info@airsafe.net.au
www.airsafe.net.au

ABN 85 143 863 496

DISTRIBUTION

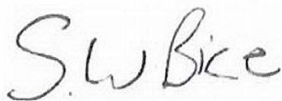
Copies	Recipient
2	Daniel Johnston Blue Mountains City Council Strategic Assets Officer Locked Bag 1005 KATOOMBA NSW 2780

© Airsafe OHC Pty Limited [Airsafe]

The information contained in this document is intended for the sole use of the Client identified on the cover sheet for the purpose for which it has been prepared. Airsafe undertakes no duty to or accepts any responsibility for any third party who may rely upon this document.

All rights reserved. No section or element of this document may be removed, reproduced, electronically stored or transmitted in any form without the written permission of Airsafe.

Prepared By:



Simon Bice
Consultant

Reviewed By:



Kieran White
Manager

TABLE OF CONTENTS

EXECUTIVE SUMMARY	6
REFERENCES	10
TERMS AND DEFINITIONS	11
1 INTRODUCTION	12
1.1 AUTHORISATION	12
1.2 SCOPE OF WORK1	12
1.3 SITE DESCRIPTION	12
1.4 METHODOLOGY	12
1.5 INACCESSIBLE AREAS	13
1.6 LIMITATIONS	15
2 GENERAL INFORMATION	17
2.1 EFFECTS ON HEALTH	17
2.2 ASBESTOS CLASSIFICATION	18
2.2.1 Bonded Asbestos Material	18
2.2.2 Friable Asbestos Material	18
2.3 CONTROL MEASURES	18
3 RESULTS	20
3.1 ASBESTOS REGISTER	20
3.1.1 Asset D00153 – Jubilee Park, Blackheath – Tennis Clubhouse	20
3.1.2 Asset E00544 – Blackheath Pool – Amenities Block	23
3.1.3 Asset D00081 – Blackheath Hall, Library and Neighbourhood Centre	26
3.1.4 Asset D00259 – Blackheath Caravan Park – Residence, Office, Garage and Store	29
3.1.5 Asset D00230 – Blackheath Arts Centre	31
3.1.6 Asset E00082 – Blaxland Waste Management Facility – Storage Shed	33
3.1.7 Asset D00149 – Lennox Park, Blaxland – Tennis Clubhouse	34
3.1.8 Asset D00164 – Glenbrook Pool – Main Building	36
3.1.9 Asset D00165 – Glenbrook Park – Tennis Clubhouse	40
3.1.10 Asset D00163 – Glenbrook Park – Visitors Information Centre	42
3.1.11 Asset D00142 – Gloria Park, Hazelbrook – Pavilion	44
3.1.12 Katoomba Council Depot – Administration Building	47
3.1.13 Asset E00494 – Katoomba Council Depot – Animal Shelter	49
3.1.14 Asset E00491 – Katoomba Council Depot – Building Services	50
3.1.15 Asset E00492 – Katoomba Council Depot – Mechanical Services Workshop	53
3.1.16 Asset D00666 – Katoomba Council Depot – Stock Pound Supplies Building	54
3.1.17 Katoomba Council Depot – Vehicle Shed	55
3.1.18 Asset E00474 – Katoomba Aquatic Centre – Canteen, Clubhouse and Office	56
3.1.19 Asset E00041 – Katoomba Aquatic Centre – Plant Building	58
3.1.20 Asset E00327 – Kingsford Smith Park, Katoomba – Music Shell	60
3.1.21 Asset D00247 – Katoomba Falls Caravan Park – Office and Residence	61
3.1.22 Asset D00238 – Katoomba Sports and Recreation Centre	63
3.1.23 Asset D00006 – Solitary Restaurant, Katoomba	69
3.1.24 Asset E00045 – Solitary Restaurant, Katoomba – Storage Shed	74
3.1.25 Asset D00099 – Trotting Pavilion – Katoomba Men’s Shed	75
3.1.26 Asset E00515 – Lawson Pool – Change Rooms, Pump, Electrical Rooms	76
3.1.27 Asset D00097 – Lawson Pool – Canteen and Office	78
3.1.28 Asset D00040 – Former Lawson Golf Course – Clubhouse	80
3.1.29 Asset E00017 – Former Lawson Golf Course – Machinery Shed	84
3.1.30 Asset E00513 – Lawson Depot – Storage and Workshop Building	86
3.1.31 Asset D00096 – Queen Oak Park, Lawson – Tennis Clubhouse	87
3.1.32 Asset D00151 – The Elise Langford Centre, Medlow Bath	89
3.1.33 Asset D00147 – Mt Riverview Woodcraft Centre/ Men’s Shed	91

EXECUTIVE SUMMARY

The inspection identified the following asbestos containing materials:

Location	Asbestos	
	Bonded	Friable
Asset D00153 – Jubilee Park, Blackheath – Tennis Clubhouse	✓ ✗	×
Asset E00544 – Blackheath Pool – Amenities Block	✓	×
Asset D00081 – Blackheath Hall, Library and Neighbourhood Centre	✓	×
Asset D00259 – Blackheath Caravan Park – Residence, Office, Garage and Store	✓	×
Asset D00230 – Blackheath Arts Centre	✓	×
E00082 – Blaxland Waste Management Facility – Storage Shed	×	×
Asset D00149 – Lennox Park, Blaxland – Tennis Clubhouse	✓	×
Asset D00164 – Glenbrook Pool – Main Building	✓	×
Asset D00165 – Glenbrook Park – Tennis Clubhouse	✓	×
Asset D00163 – Glenbrook Park – Visitors Information Centre	×	×
Asset D00142 – Gloria Park, Hazelbrook – Pavilion	×	×
Katoomba Council Depot – Administration Building	✓	×
Asset E00494 – Katoomba Council Depot – Animal Shelter	×	×
Asset E00491 – Katoomba Council Depot – Building Services	✓	×

The control measures required for identified and presumed ACM should be determined from the risk assessment and should follow the following principles:

- Control Measure 1 -** If the ACM are friable and not in a stable condition, and there is a risk to health from exposure, they should be removed by an asbestos removalist as soon as practicable.
- Control Measure 2 -** If the ACM are friable but are in a stable condition and are accessible, serious consideration should be given to their removal. If the removal is not immediately practicable, short-term control measures, such as sealing and enclosure, May be able to be used until removal is possible.
- Control Measure 3 -** If the ACM are not friable and are in a good, stable condition, minimising disturbance and encapsulation may be appropriate controls.
- Control Measure 4 -** Any remaining ACM should be clearly labeled, where possible, and regularly inspected to ensure they are not deteriorating or otherwise contributing to an unacceptable health risk.

These control measures reflect the following hierarchy of controls:

- 1 - Elimination/removal (most preferred);
- 2 - Isolation/enclosure/sealing;
- 3 - Engineering controls;
- 4 - Safe Work Practices (administrative controls); and
- 5 - Personal Protective Equipment (PPE) (least preferred).

ACM need to be removed before demolition, partial demolition, renovation or refurbishment if they are likely to be disturbed by those works in accordance with the Code of Practice: How to Safely Remove Asbestos [Safe Work Australia, 2011].

3 RESULTS

3.1 ASBESTOS REGISTER

3.1.1 Asset D00153 – Jubilee Park, Blackheath – Tennis Clubhouse

Address: 9-41 Leichhardt Street, Blackheath

Inspection Date: 30/10/15

Inspected By: Simon Bice

Location	Material	Sample ID	Sample Status	Photo No.	Asbestos Classification	Condition	Accessibility	Re-inspect	Current Label	Control Measure	Record of Works Undertaken
Asset D00153 – Jubilee Park, Blackheath – Tennis Clubhouse											
External											
Western Perimeter – eave lining 1042	Fibreboard	28781-1-1	Positive	1	Bonded	Stable	Low	November 2020	Not labeled	4	JMB CC 19/273232 Removed 26/11/2019
Eastern and Western Perimeters – Roof – flashing 1043	Fibrous cement sheeting	28781-1-2	Positive	2	Bonded	Stable	Low	November 2020	Not labeled	4	JMB CC 19/273232 Removed 26/11/2019

Location	Material	Sample ID	Sample Status	Photo No.	Asbestos Classification	Condition	Accessibility	Re-inspect	Current Label	Control Measure	Record of Works Undertaken
Eastern Perimeter – Electrical Box – electrical backing board 1044	Bituminous backing board	28781-1-3	Positive	3	Bonded	Stable	Medium	November 2020	Not labeled	4	JMB CC 19/273232 Removed 26/11/2019
Northern Perimeter – infill panel over doorway to storeroom 1046	Fibrous cement sheeting	28781-1-4	Positive	4	Bonded	Stable	Medium	November 2020	Not labeled	4	JMB CC 19/273232 Removed 26/11/2019
Northern Perimeter – ground surface – debris 1047	Fibrous cement sheeting	28781-1-5	Positive	5	Bonded	Unstable	High	November 2020	Not labeled	3	CC 27/6/2016 17/122587
Car Park – ground surface – debris *only 1 piece sighted; potential for more material beneath the surface 1050	Fibrous cement sheeting	28781-1-6	Positive	6	Bonded	Unstable	High	November 2020	Not labeled	3	CC 27/6/2016 17/122587
Internal											
Kitchen – ceiling lining 1055	Fibreboard	28781-1-7	Positive	7	Bonded	Stable	Low	November 2020	Not labeled	4	JMB CC 19/273232 Removed 26/11/2019
Kitchen – riser – external wall cladding 1058	Fibreboard	Similar to 28781-1-9	Assumed Positive	8	Bonded	Stable	Medium	November 2020	Not labeled	4	JMB CC 19/273232 Removed 26/11/2019

Location	Material	Sample ID	Sample Status	Photo No.	Asbestos Classification	Condition	Accessibility	Re-inspect	Current Label	Control Measure	Record of Works Undertaken
Main Room (sunroom) = ceiling lining 1061	Fibreboard	28781-1-8	Positive	9	Bonded	Stable	Low	November 2020	Not labeled	4	JMB CC 19/273232 Removed 26/11/2019
Main Room (sunroom) = eastern and western doorways = internal wall cladding 1062	Fibreboard	28781-1-9	Positive	8	Bonded	Stable	Medium	November 2020	Not labeled	4	JMB CC 19/273232 Removed 26/11/2019
Main Room (sunroom) = internal wall cladding above and below windows 1063	Fibreboard	28781-1-10	Positive	9	Bonded	Stable	Medium	November 2020	Not labeled	4	JMB CC 19/273232 Removed 26/11/2019
Storeroom = ceiling lining 1064	Fibreboard	28781-1-11	Negative		-	-	-	-	-	-	JMB CC 19/273232 Removed 26/11/2019

APPENDIX A – ANALYSIS RESULTS

TEST REPORT

November 25, 2015

Blue Mountains City Council
Locked Bag 1005
KATOOMBA NSW 2780

Your Reference: Blue Mountains City Council – Stage 3
Job Number: 28781

Attention: Daniel Johnston

Dear Daniel,

In accordance with your instructions, Airsafe tested samples from the above site for asbestos content.

The following samples were processed on the dates indicated.

Samples:	Sample's
Date of Sampling:	07/10/15-11/11/15
Date of Analysis:	08/10/15-12/11/15
Date of Preliminary Report Sent:	Not Issued

The results and associated quality control are contained in the following pages of this report.

Should you have any queries regarding this report please contact the undersigned.

Yours faithfully
AIRSAFE OHC PTY LIMITED



Kieran White
Manager

PROJECT: Blue Mountains City Council – Stage 3
JOB NO: 28781

Sample No	Location/Reference	Sample Description	Asbestos ID - Material
28781-1-1	Jubilee Park, Blackheath – Tennis Clubhouse – External – Eastern Perimeter – eave lining	7x3x1mm fibreboard fragment	Chrysotile asbestos detected Organic fibres detected
28781-1-2	Jubilee Park, Blackheath – Tennis Clubhouse – External – Eastern Perimeter – Roof – flashing/fascia's	25x11x4mm fibrous cement sheet fragment	Chrysotile asbestos detected
28781-1-3	Jubilee Park, Blackheath – Tennis Clubhouse – External – Electrical Box – electrical backing board	3x3x2mm bituminous backing board fragment	Chrysotile asbestos detected
28781-1-4	Jubilee Park, Blackheath – Tennis Clubhouse – External – Northern Perimeter – infill panel over doorway to storeroom	2x2x1mm fibrous cement sheet fragment	Chrysotile asbestos detected
28781-1-5	Jubilee Park, Blackheath – Tennis Clubhouse – External – Northern Perimeter – ground surface – debris	74x24x5mm fibrous cement sheet fragment	Chrysotile asbestos detected
28781-1-6	Jubilee Park, Blackheath – Tennis Clubhouse – External – Car Park – ground surface – debris	44x37x5mm fibrous cement sheet fragment	Chrysotile asbestos detected
28781-1-7	Jubilee Park, Blackheath – Tennis Clubhouse – Internal – Kitchen – ceiling lining	13x7x2mm fibreboard fragment	Chrysotile asbestos detected Organic fibres detected
28781-1-8	Jubilee Park, Blackheath – Tennis Clubhouse – Internal – Main Room (sunroom) – ceiling lining	5x4x1mm fibreboard fragment	Chrysotile asbestos detected Organic fibres detected
28781-1-9	Jubilee Park, Blackheath – Tennis Clubhouse – Internal – Main Room (sunroom) – eastern doorway – internal wall cladding	7x4x1mm fibreboard fragment	Chrysotile asbestos detected Organic fibres detected
28781-1-10	Jubilee Park, Blackheath – Tennis Clubhouse – Internal – Main Room (sunroom) – internal wall cladding above and below windows	6x3x2mm fibreboard fragment	Chrysotile asbestos detected Organic fibres detected
28781-1-11	Jubilee Park, Blackheath – Tennis Clubhouse – Internal – Storeroom – ceiling lining	6x4x1mm fibreboard fragment	No asbestos detected Organic fibres detected
28781-2-1	Blackheath Pool – Amenities Block – External – Male Changerooms and Toilets – eave linings	3x2x1mm fibrous cement sheet fragment	Chrysotile asbestos detected
28781-2-2	Blackheath Pool – Amenities Block – External – Female Changerooms and Toilets – western perimeter – electrical box – electrical backing board	3x2x2mm bituminous backing board fragment	Chrysotile asbestos detected
28781-2-3	Blackheath Pool – Amenities Block – Internal – Male Changerooms and Toilets – Ceiling lining	4x2x1mm fibrous cement sheet fragment	Chrysotile asbestos detected
28781-2-4	Blackheath Pool – Amenities Block – Internal – Male Changerooms and Toilets – toilet cistern	4x2x1mm cement fragment	No asbestos detected
28781-2-5	Blackheath Pool – Amenities Block – Internal – Male Changerooms and Toilets – toilet partition wall	4x3x1mm fibrous cement sheet fragment	Chrysotile asbestos detected
28781-2-6	Blackheath Pool – Amenities Block – Internal – Canteen – central ceiling lining	8x5x1mm fibreboard fragment	Chrysotile asbestos detected Organic fibres detected

APPENDIX B – PHOTOGRAPHS



Photo 1: Asset D00153 – Jubilee Park, Blackheath – Tennis Clubhouse – western perimeter – fibreboard eave lining containing asbestos.



Photo 2: Asset D00153 – Jubilee Park, Blackheath – Tennis Clubhouse – eastern/western perimeter's – asbestos cement sheet flashing.

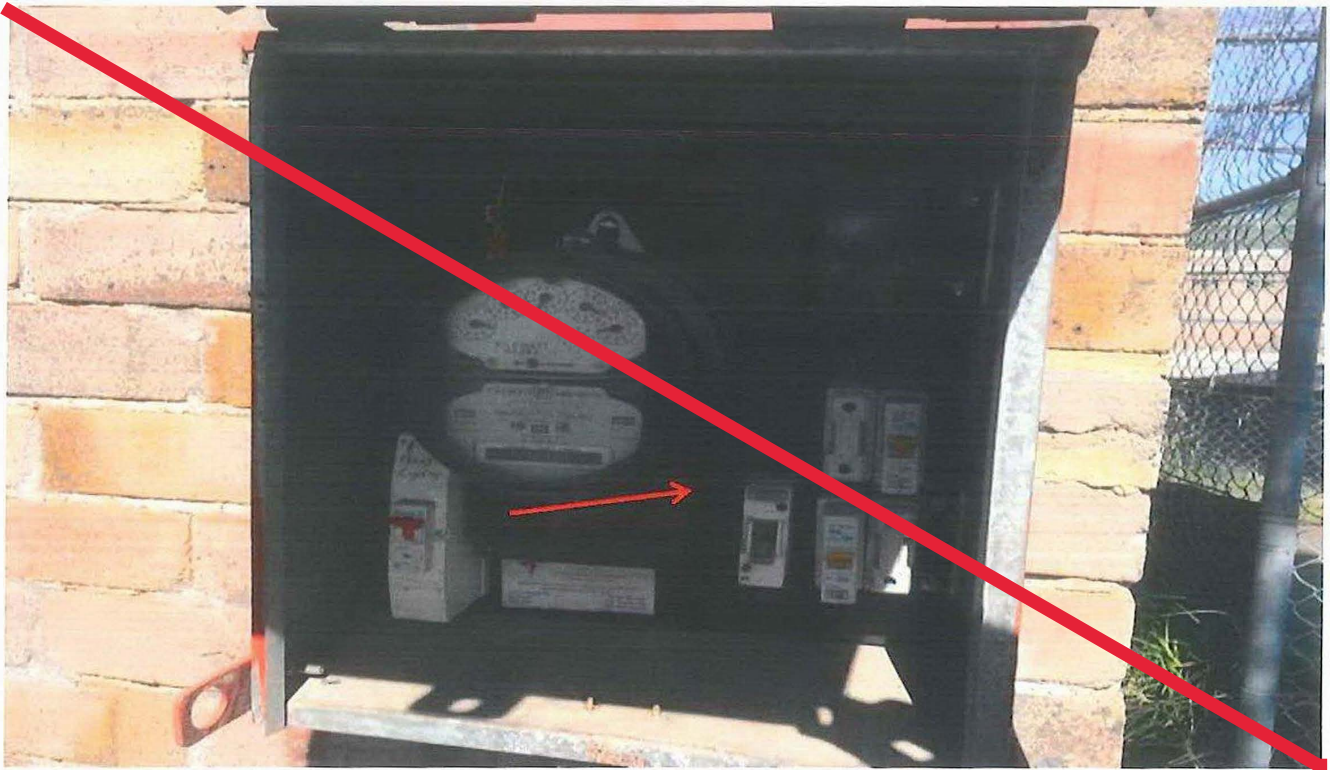


Photo 3: Asset D00153 – Jubilee Park, Blackheath – Tennis Clubhouse – eastern perimeter – bituminous electrical backing board containing asbestos.

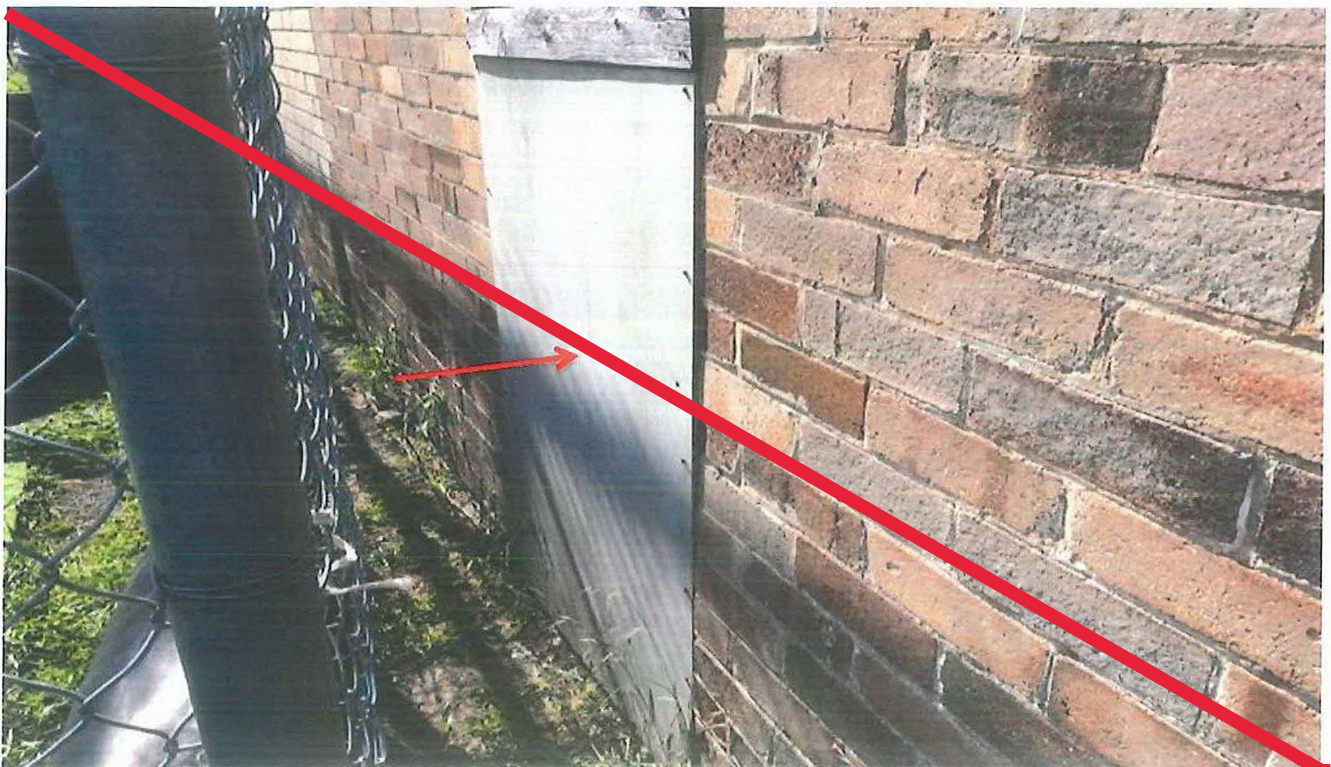


Photo 4: Asset D00153 – Jubilee Park, Blackheath – Tennis Clubhouse – northern perimeter – asbestos cement sheet infill panel over doorway.



Photo 5: Asset D00153 – Jubilee Park, Blackheath – Tennis Clubhouse – northern perimeter – asbestos cement sheet debris.

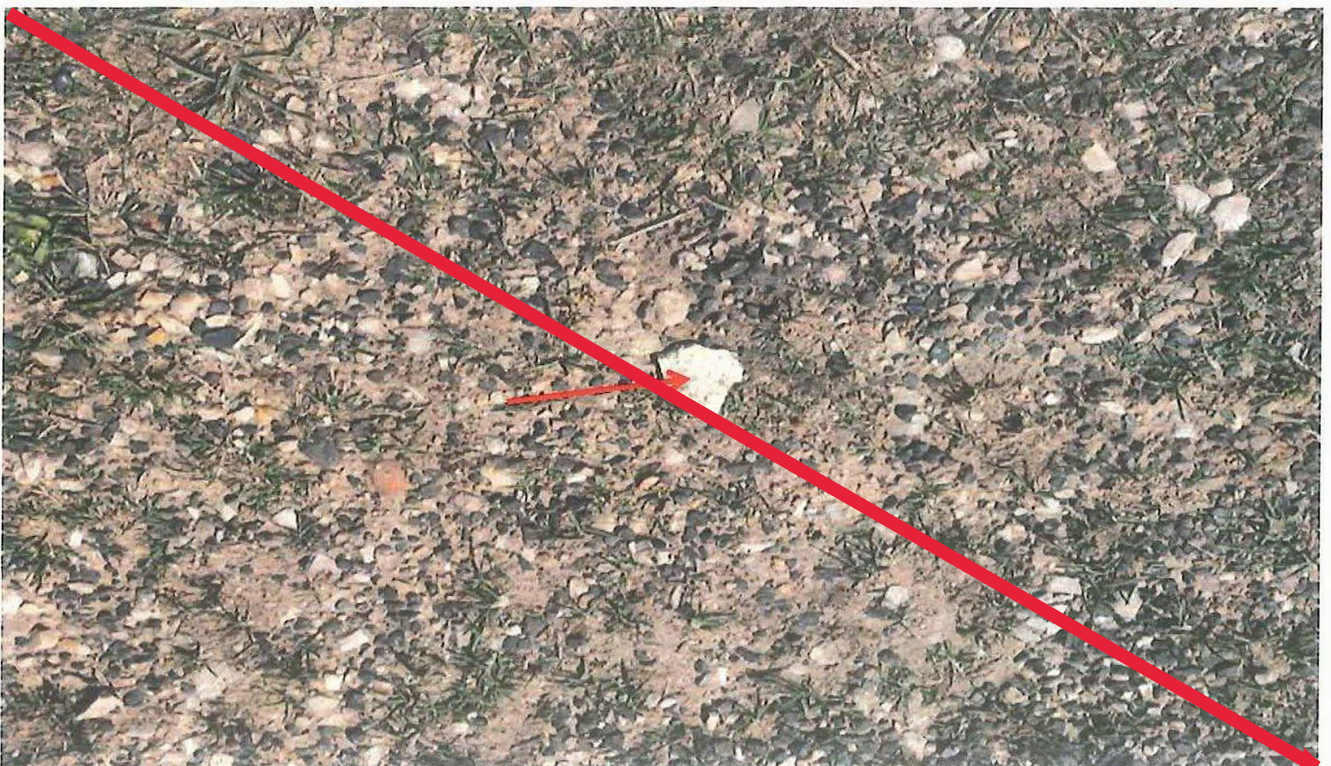


Photo 6: Asset D00153 – Jubilee Park, Blackheath – Tennis Clubhouse – carpark area – asbestos cement sheet debris.

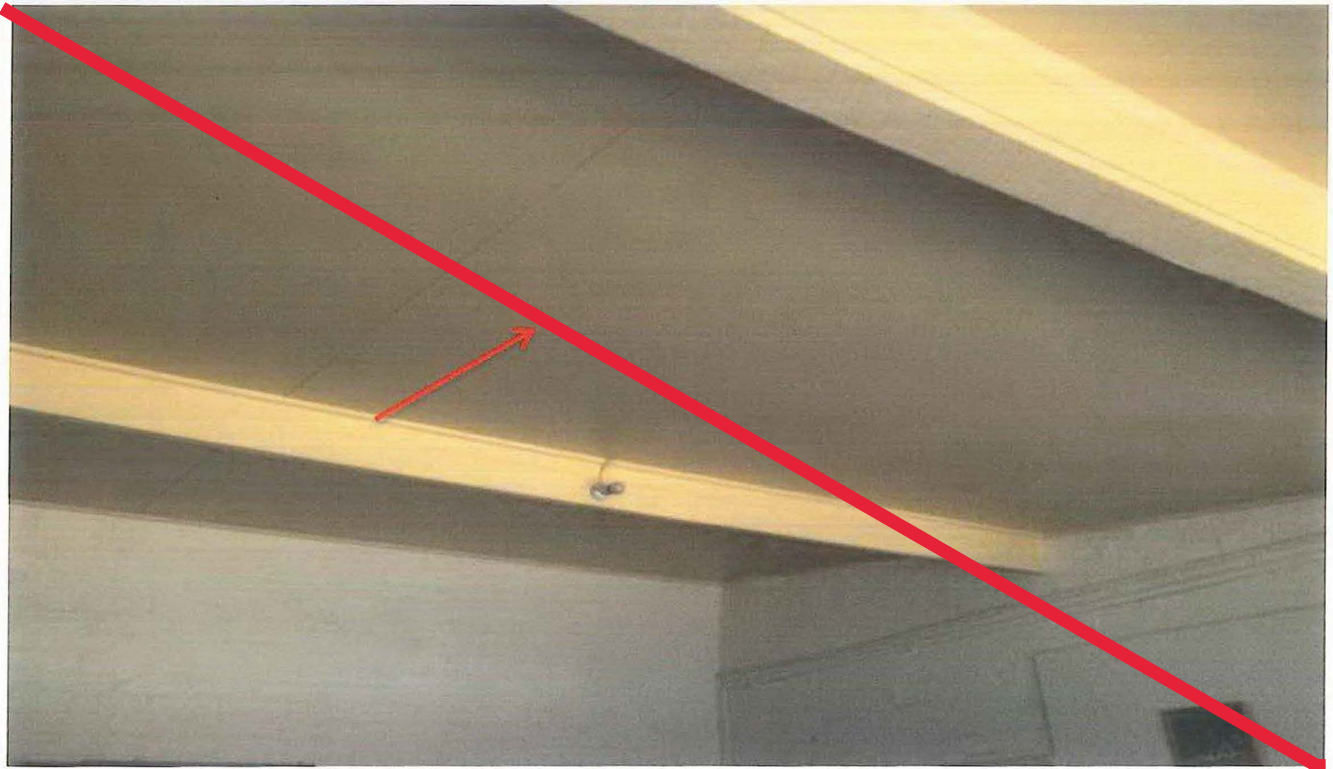


Photo 7: Asset D00153 – Jubilee Park, Blackheath – Tennis Clubhouse – kitchen – fibreboard ceiling lining containing asbestos.



Photo 8: Asset D00153 – Jubilee Park, Blackheath – Tennis Clubhouse – kitchen and eastern entrance doorway – fibreboard containing asbestos riser covering and internal wall.

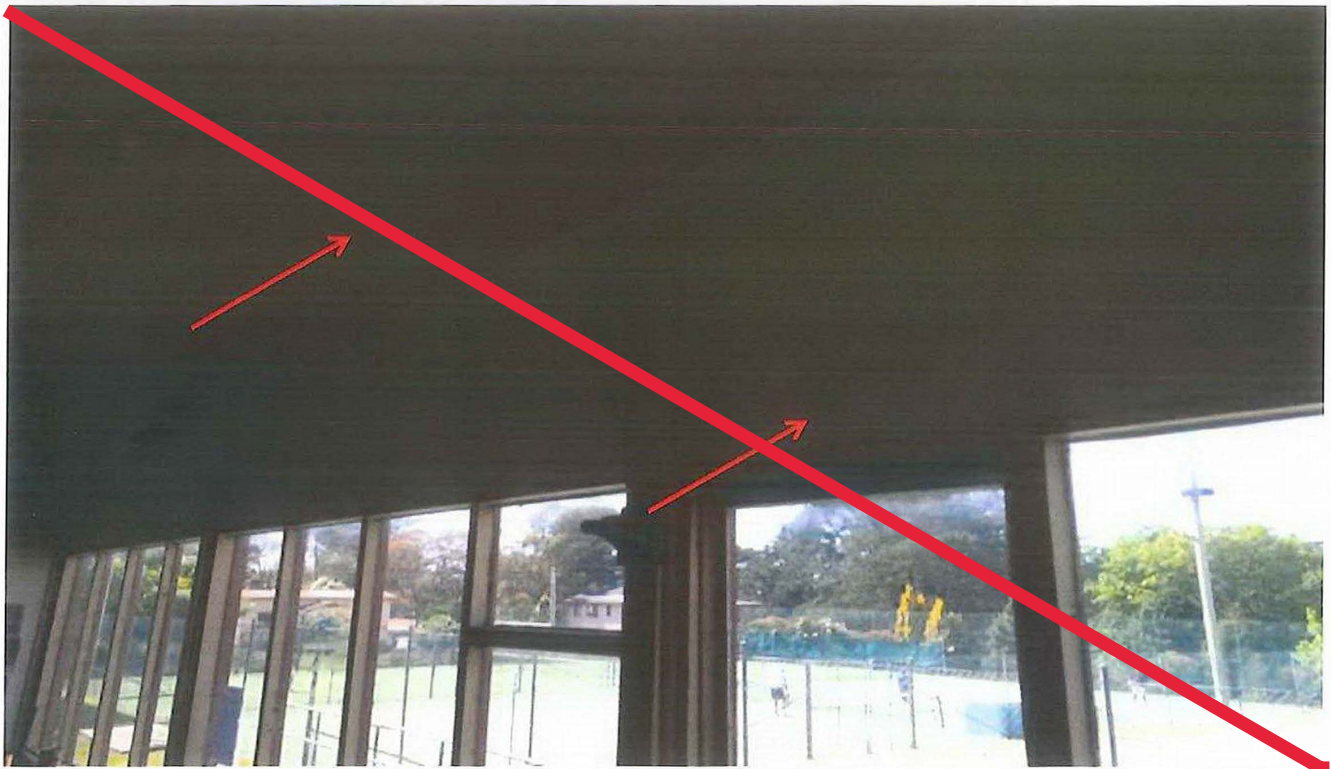


Photo 9: Asset D00153 – Jubilee Park, Blackheath – Tennis Clubhouse – main room (sunroom) – fibreboard containing asbestos ceiling lining and internal wall cladding above windows.



Photo 10: Asset E00544 – Blackheath Pool – Amenities Block – asbestos cement sheet eave linings and panels above the windows of the Male Changerooms and Toilets.

APPENDIX C – WARNING SIGNS AND LABELS

